



**JBC**

[www.jbctools.com](http://www.jbctools.com)

High power for industrial soldering applications  
**Heavy Duty station**

# Heavy Duty station

Industrial use equipment ready to work intensively

▶ Highest Power250 wats peak power

▶ The exclusive solution for high thermal demands and prolonged soldering applications.

▶ The answer to your needs. Used in production of solar panels, multi-layered circuits and components of large dissipation surfaces

## Intuitive Menu

Easy browsing for working with total comfort



### Customizable station

Personalize the parameters according to your work needs.



### Partial counters

Total and partial time registration for each port: work, sleep and hibernation hours.



### Graphics

Optimize soldering quality by analyzing the temperature and power data.



### Communication Station-PC

Update station software and export graphics via PC.



### JBC-Net, your Soldering Network

Organize, manage and control all the stations from your PC.

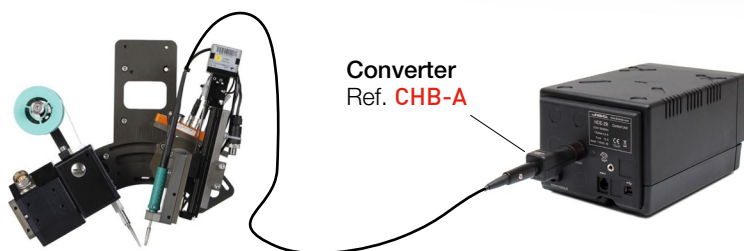


### Robots

Automate the soldering process by managing the station via Robot.

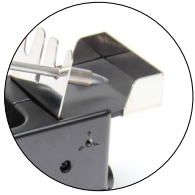
### HDRE-B Robot station

For repetitive jobs requiring precise movements. The Converter (Ref. CHB-A) is required.

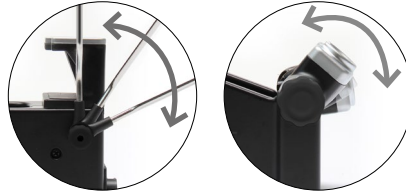


## Increase productivity

Save time by using the quick cartridge changer. This allows you to work on different soldering jobs.



## Stand Extend the tip life



## Intelligent Heat Management

When the tool is placed on the stand the **Sleep & Hibernation** features reduce the temperature and extend a tip's life up to 5x longer.

## Suit position

The tool holder and the cable collector are easily adjustable.

## Tip Cleaner with antispash rubber

Improve thermal transfer of the tip

The new **antispash rubber** prevents splashing of solder particles and maintain the work area clean.

Choose from 3 safe methods according to your needs: **brass wool, inox wool or sponge**. The integrated wiper also allows you to remove excess solder from the tip single-handedly.



Tip Wiper



Sponge



## Specifications

Dimensions	145 x 120 x 225 mm (5.70 x 4.72 x 8.86 in)
HDE Weight	6,120 Kg (13.49 lb)
KHT470A Weight	1,665 kg (3.67 lb)
Output peak power	250 W
Ref. - Voltage (AC) / Fuse	<b>HDE-1B</b> - 120 V / 4A
	<b>HDE-2B</b> - 230 V / 2A
	<b>HDE-9B</b> - 100 V / 4A

Temperature selection	90 - 500 °C (190 - 932 °F)
Idle Temp. Stability	±1.5 °C (±3 °F)
Tip to ground voltage	< 2 mV RMS
Tip to groun resistance	<2 ohms
Ambient operating temp.	10 - 40 °C (50 - 104 °F)
Communication connectors	USB-A, USB-B, Peripherals
Robot connector	RJ12 for RS-232 connection

# Connectables

## HD Thermal Tweezers

Reduce handling time

### KHT470A HD Tweezers Kit

It requires 2 HDE Heavy Duty control units in order to manage the cartridges individually and optimize their thermal performance.



## T470 HD Handles

For greater demands

For intensive soldering jobs requiring continued high thermal power. They feature a non-slip-grip with a good thermal insulation and a screw which fixes the cartridge wand prevents rotation.

### T470-A HD Purposes

### T470-B Heavy Duty HD

### T470-SA HD Purposes with 3m cable



### T470-ZA Tri-lobed grip



Tri-lobed shape for better handling

### T470-FA Thermal Insulation Grip

### T470-MC Soft Thermal Insulation Grip with 3m cable



Foam

### T470-NA HD Nitrogen

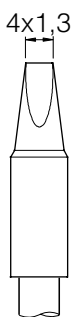


Nitrogen feed

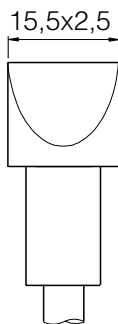
The JBC GN-A Nitrogen Generator Module or an external nitrogen feed is needed

## C470 Cartridge range

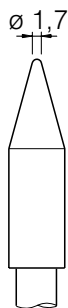
Find the C470 cartridges that best suit your needs in [www.jbctools.com](http://www.jbctools.com)



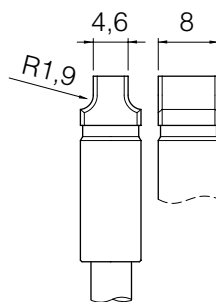
C470-014



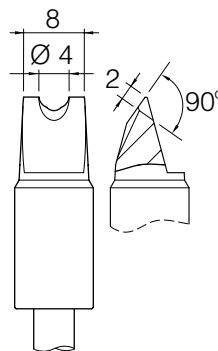
C470-007



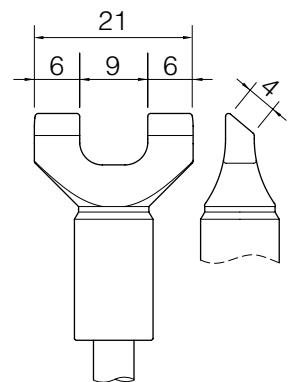
C470-001



C470-050



C470-055



C470-051

E 1:1

