

Weller®

Operating Instruction WX Foot switch

Order No. T0058764746

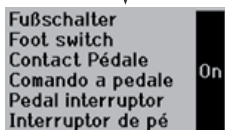


Requirements:

WXD 2 or WXA 2 soldering station and WXR 3 rework station: Firmware version 065 or higher

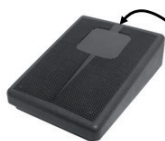
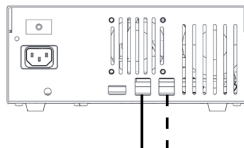
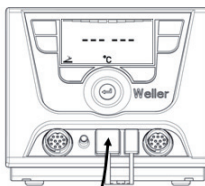
Networkconfiguration:

WXD 2 / WXA 2 / WXR 3



WX solder station*

WXR 3 rework station



Replacement cable
T0058764710



Foot switch (not pushed)



Foot switch (pushed)

*(Note: WX foot switch is only connectable to FRONT RS232 PORT)

Weller Tools GmbH
Carl-Benz-Str., 2
74354 Besigheim, Germany
Phone: +49 (0) 7143 580-0
info@weller-tools.com

Apex Tool Group, LLC
1000 Lufkin Road
Apex NC 27539
USA
Phone: +1 (800) 688-8949

The data specified above only serve to describe the product. No statements concerning a certain condition or suitability for a certain application can be derived from our information. The given information does not release the user from the obligation of own judgement and verification. It must be remembered that our products are subject to a natural process of wear and aging. © This document, as well as the data, specifications and other information set forth in it, are the exclusive property of Weller Tools GmbH. Without their consent it may not be reproduced or given to third parties. Subject to modifications.

Printed in Germany. T005 57 365 00 / 11.2014

