



Justrite Safety Group

Dry Areas - Modular Systems

464 Skywalker HD™ ESD Nitrile FR



464 SKYWALKER HD™ ESD NITRILE FR

Dry Areas - Heavy duty

464 Skywalker HD™ ESD Nitrile FR

Heavy duty rubber tiles of 91 cm x 91 cm can be easily assembled for coverage of large areas or individual work stations. Ergonomic benefit derived from a 13 mm thick worker platform with a bubble pattern for maximum fatigue relief in dry industrial environments.

The unique design and craftsmanship make the mat easy to handle and easy to install on-site. A tooled grid of 30 cm x 30 cm sections on the underside of the mat makes further customization quick and easy. Attachable bevelled edges prevent tripping and allow inside and outside corners.

Slip resistance rating R9 according to DIN 51130. Static dissipative natural rubber compound Meets IEC61340-4-1 (category DIF), measured resistance Rg 106 - 109 Ω, Rp 106 - 109 Ω. Fire classification Bfl-S1 tested according to EN 13501-1. Resistant to most industrial oils and suitable for welding areas.

Recommended use:

- Heavy duty
- Industrial Environments
- For placement in ESD assembly lines, picking, packing and logistics warehouses, individual work stations.

Specifications:

- Static dissipative and fire retardant nitrile rubber compound 100%
- Attachable bevelled edges are available
- Overall thickness: 13 mm
- Weight: 10 kg/m²
- Fire rating: EN 13501-1 Bfl-S1
- Slip rating: R9
- Free of DOP, free of DMF, free of ozone depleting substances, free of silicone and free of heavy metals, Resistant to most industrial oils and suitable for welding areas, Meets IEC61340-4-1 (category DIF), measured resistance Rg 10⁶ - 10⁹ Ω, Rp 10⁶ - 10⁹ Ω

Recommended accessories:

- 469 SkywalkerHD Safety Line™
- 441 SkywalkerHD o-Curve™ Safety Ramp Nitrile
- 434 Skywalker HD i-Curve™ ESD Nitrile FR
- 461 SkywalkerHD™ Safety Ramp Nitrile
- 444 Skywalker HD o-Curve™ ESD Nitrile FR
- 431 SkywalkerHD i-Curve™ Safety Ramp Nitrile

Standard sizes:

- 91 cm x 91 cm

Custom sizes:

- per m²

Colours:

- Black

Cleaning instructions:

- Daily sweeping with a brush



PRODUCT TESTING

Wear Resistance

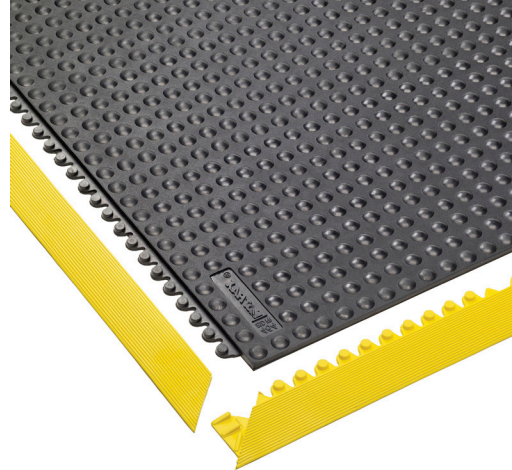
Slip resistance

Anti-fatigue

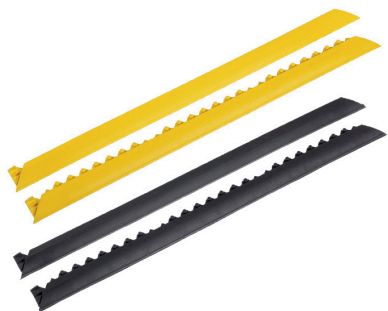
GOOD BETTER BEST

464 Skywalker HD™ ESD Nitrile FR (black)

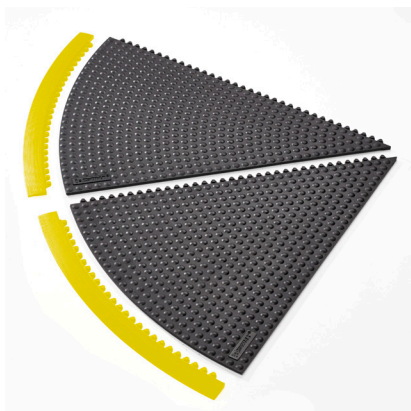
Art. nr.	Dimensions	Weight kg
464S0000BL	per m ²	10
464S0033BL	91 cm x 91 cm	10



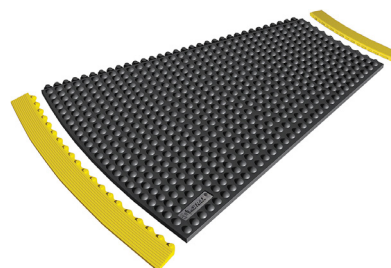
Recommended accessories:



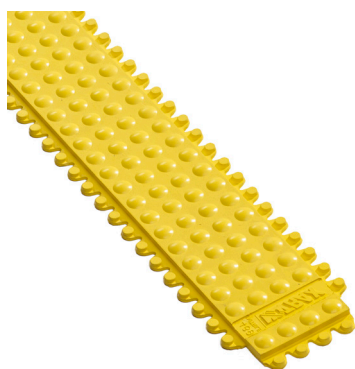
461 SkywalkerHD™ Safety Ramp Nitrile



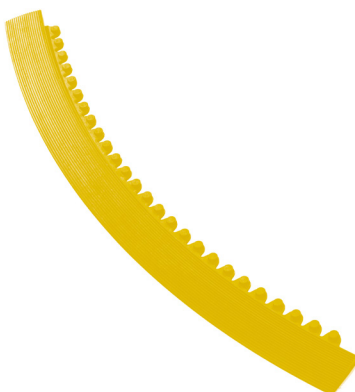
434 Skywalker HD i-Curve™ ESD Nitrile FR



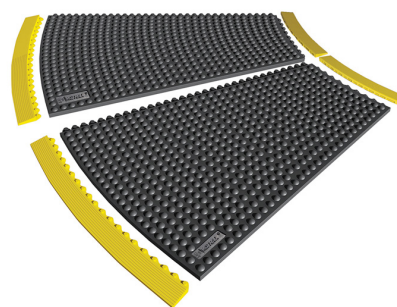
444 SkywalkerHD o-Curve™ ESD Nitrile FR



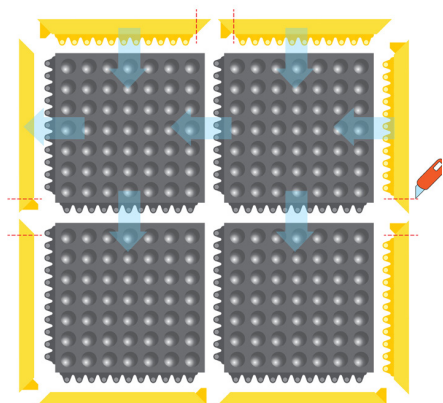
469 SkywalkerHD Safety Line™



431 SkywalkerHD i-Curve™ Safety Ramp Nitrile



441 SkywalkerHD o-Curve™ Safety Ramp Nitrile



Available on demand in custom sizes and configurations. Calculated on square meter basis.

464 Skywalker HD™ ESD Nitrile FR

GENERAL DESCRIPTION

Type	Dry Areas - Modular Systems
Description	Modular system, oil proof and fire retardant.
Recommended use	Dry Areas
Surface	Ergonomic bubble
Category	Ergonomic, Anti-fatigue Safety Matting Heavy duty
Colours	Black
Special remarks	Resistant to most industrial oils and suitable for welding areas.
Edges	Attachable bevelled edges are available

TECHNICAL SPECIFICATIONS

Material	Static dissipative and fire retardant nitrile rubber compound 100%
Process	Compression Moulding
Total weight	10 kg/m ²
Overall thickness	13 mm

TESTS

Fire rating	EN 13501	EN 13501-1 Bfl-S1
Slip rating	DIN 51130	R9
Meets EOS/ESD-S4	measured resistance for work surfaces	
	Rg 10 ⁶ - 10 ⁹ Ω Rp 10 ⁶ - 10 ⁹ Ω Electrostatic charge (walking test), meets ISO6356 and EN1815	
Sustainability	Recyclable material	
Abrasion resistance	ASTM D3884-01	0.824
Elongation	ASTM D412	210%
Breaking load	ASTM D412	4.80 Mpa
Tear Strength	ASTM D1004	10.5N/mm
Hardness	ASTM D2240-02	67 Shore A
Surface flammability	ASTM D2859	Pass

DIMENSIONS

Standard sizes	Full rolls	Custom lengths
91 cm x 91 cm		