

ESD-Occupational shoes rubber Clog black ESD



Art. 5310

rubber

- ▶ Size 36-47
- ▶ CE, EN ISO 20347:2012, OB, FO,A, SRC
- ▶ Smooth leather, perforated, black
- ▶ Leather top layer
- ▶ Heel strap foldable, adjustable
- ▶ PU midsole
- ▶ Slip resistance special rubber outsole sole
- ▶ ESD dissipative according to DIN EN 61340



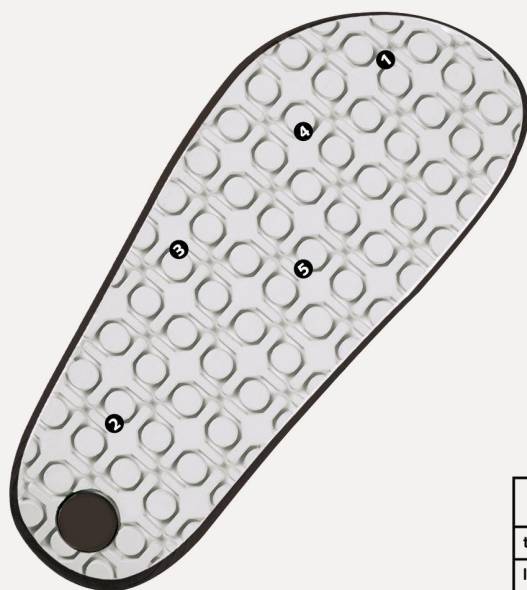
CLIMATE CLASS 1



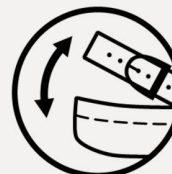
TECHNOLOGY

OUTSOLE

- 1_ ESD dissipative according to DIN EN 61340
- 2_SRC slip resistance according to EN ISO 20347:2012
- 3_Cross/ circle profile
- 4_Rubber outsole
- 5_Acid and base resistant
- 6_Fuel resistance



HEEL STRAP
adjustable, foldable



	Product qualification DIN EN 61340-5-1:
test method	IEC 61340-5-1
limit values	$R \leq 10^8 \Omega$
average value	$R = 10^7 \Omega$